

# Display Home - Bombay



\* Images For illustration purposes only

## Bombay - Display Range

Living Area: 133.2m<sup>2</sup>

Total Area: 168.4m<sup>2</sup>

Minimum Block Width: 10m

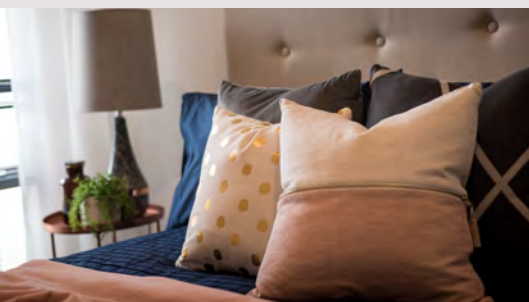
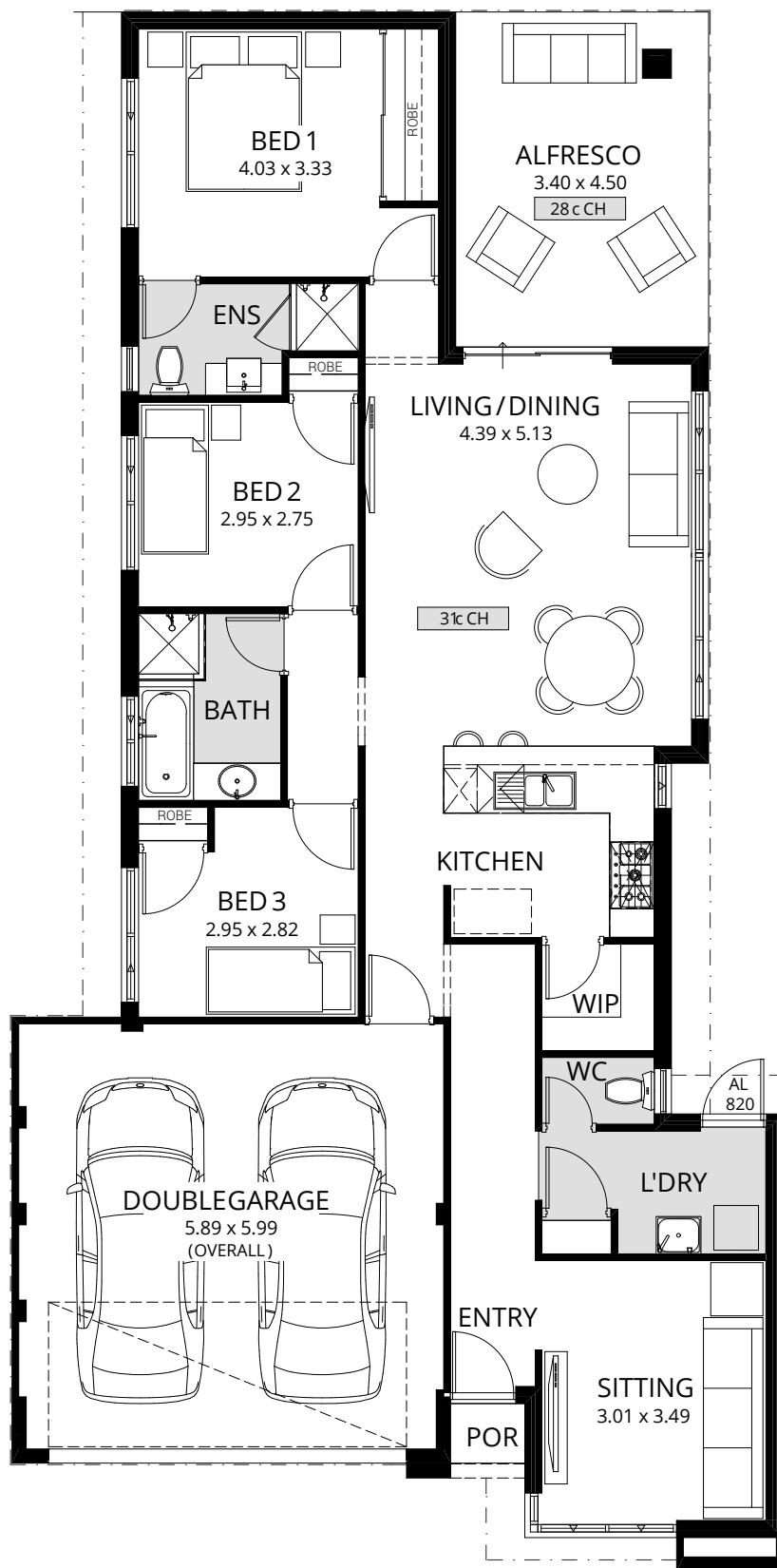
## Display Open

Mon & Wed 2-5pm

Sat, Sun & Public Holidays 1-5pm

7 Windermere Boulevard,  
AVELEY WA 6069

Discover more at  
[fhbdirect.com.au](http://fhbdirect.com.au) or call us  
today (08) 9244 7444



# Display Home Specification

The Bombay display home includes First Home Buyers Direct **Deluxe Specification**, plus the following specification upgrades;

- Porch with 32c high brickwork, 24c high t-lintel and 25c ceilings
- Feature rendered 36c high pier to front elevation, including horizontally lined gable
- Second feature render colour to front elevation
- Corinthian Slimlite SLM204 paint grade Entry door with translucent glazing
- 31c high ceilings to the Kitchen, Living & Dining, 28c ceilings to the Alfresco
- Stylus Cadet mixer to the Ensuite only
- 700mm high tiled splashback to the Kitchen
- Dishwasher recess with a single powerpoint & cold water connection
- Westinghouse Stainless Steel 900mm 'Silver Package' appliances, as follows;
  - Westinghouse WVE916SA 900mm built in oven, with touch screen controls
  - Westinghouse GHR95S 900mm gas cooktop, with electronic ignition
  - Westinghouse WRF900CS 900mm ranghood, with 3 speed twin fans
- Aluminum framed Vinyl sliding robe doors to the Bed 1
- Clear glazed aluminum framed door to the Laundry
- Mitred tiling to the Ensuite and Bath wet area tiling
- Caroma Carboni II Semi Recessed basin to the Ensuite
- 20mm Essastone tops to the Kitchen modular & island bench

## Optional Upgrades (Exclusions)

- Feature tile cladding to 32c high feature pier to front elevation
- Ducted reverse cycle air conditioning system
- LED downlights & lighting fixtures
- Main floor tiling and carpets throughout
- Window treatments throughout
- Boundary walls to left and right hand sides of home
- Landscaping and reticulation, including gates & fencing
- Communication upgrades, including a digital antenna



Award-Winning quality,  
design and service in  
every home. Guaranteed.

Visit website for full range of home designs



HIA  
Perth Housing Awards  
Award Winning Builder



Visit or call us today

Office Enquiries: (08) 6365 6240  
Monday to Friday 8am-5pm

Sales Line: (08) 9244 7444  
24 hours, 7 days a week

Fax: (08) 9244 3275

Head Office (Display Centre)  
Level 1, Suite 2  
467 Scarborough Beach Road  
Osborne Park WA 6017

Open 7 days a week

[fhbdirect.com.au](http://fhbdirect.com.au)



Follow us and see what our happy customers say about us.

Images in this brochure are for illustration purposes only. The Specification is correct at time of printing and subject to change at builders discretion. Please ask your House & Land Specialist for details. Builders Registration: 13101  
Copyright © 2016 First Home Buyers Direct.