

Maxton



* Image for illustration purposes only

Maxton - Modernist Range

The Maxton is part of our Modernist Range of home designs that suit a block width of 12-13m wide.

Living Area: 160m²

Total Area: 196m²

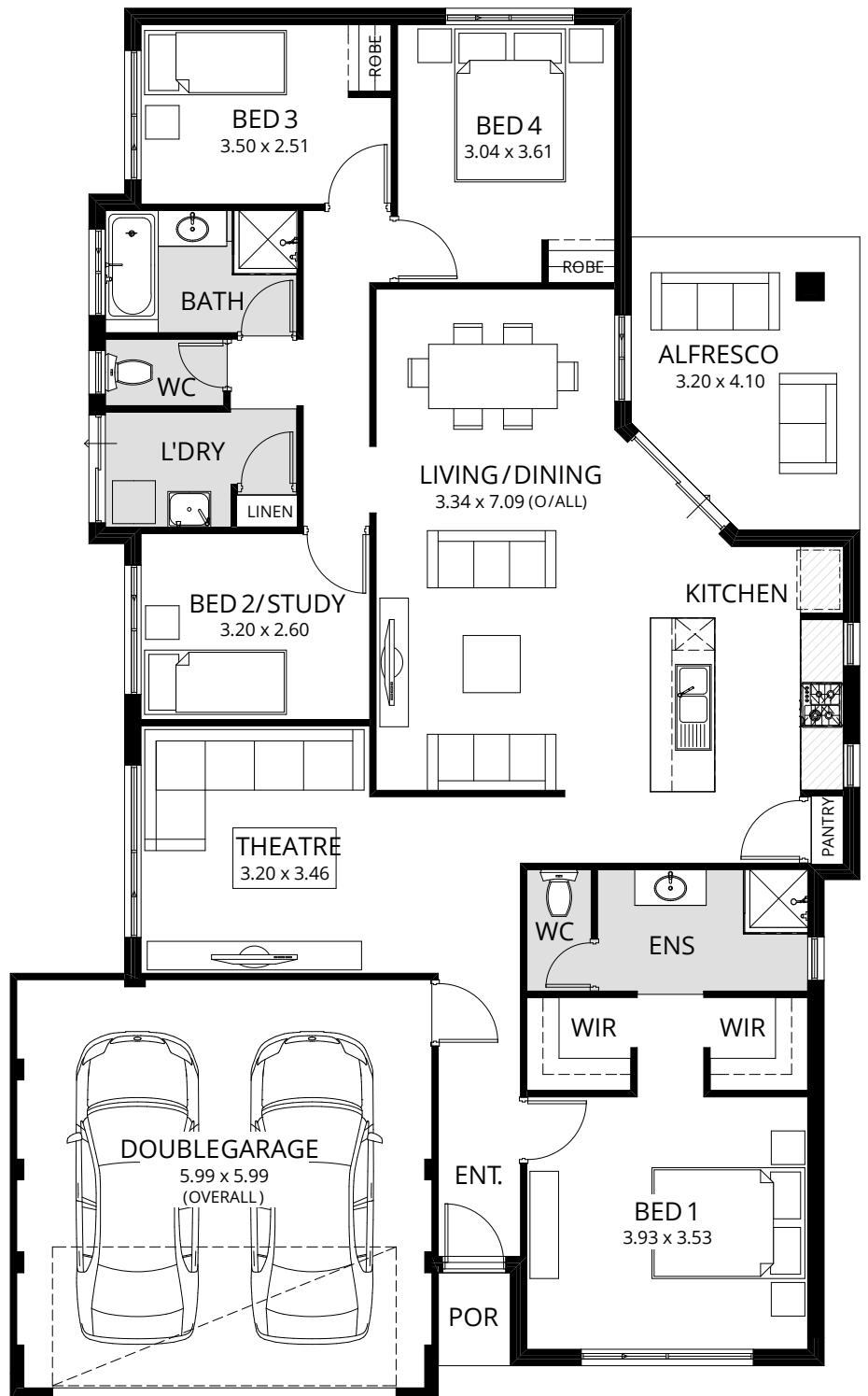
Minimum Block Width: 13m

Contact us today for more information and full specification on this home.

Call (08) 9244 7444

24 hours, 7 days a week.

fhbdirect.com.au



Full Delux Specification

Kitchen Features

- European designed Stainless Steel Hotplate inc Wok Burner
- European designed Stainless Steel Fan Forced Oven
- European designed Glass Canopy Rangehood
- Full height tiled splashback up to the Rangehood
- Choice of post form or tight form kitchen benchtops
- ABS edging to all cupboards
- Soft closing cupboards & drawers throughout
- 1 3/4 bowl sink in stainless steel with Flick Mixer
- Microwave recess/shelves (where drawn)
- Dishwasher recess, plumbing & power (where drawn)

Ensuite, Bathroom & Laundry

- European styled hand held showers
- Vitreous china basins (not plastic)
- Dual Flush full china toilet suite (not plastic cistern)
- Flick mixer tap ware throughout
- Double chrome towel rails (not plastic)
- Chrome toilet roll holders & soap dish
- Chrome floor wastes throughout (not plastic)
- Excellent range of ceramic wall & floor tiles (\$44 m2 allowance)
- Vanity cupboards (full depth) with tiled hobs (builder standard range)
- Soft closing cupboards & drawers throughout
- Exhaust fan to Ensuite
- Panel & rod shower screens to bathroom & ensuite

- Mirrors up to 2m high to bathroom & ensuite choice of framed or frameless
- Acrylic 1525mm Bath (where drawn)
- Sudsaver stainless steel trough
- Linen cupboards with 4 x shelves

Safety & Security

- Double lock-up garage with remote control sectional door (where drawn)
- Tri Lock to entry door (security & style)
- Privacy locks to Bath, Ensuite, WC & Master Bed
- Powder coated aluminium windows & sliding doors
- Window locks with key locking for vented position
- Sliding door locks with key locking for vented position
- Electrical safety switch
- Hard wired smoke alarms as required

Internal Features

- Built in robes with shelf and rail (where drawn)
- Metal corner beads to all exposed corner plaster walls
- Quality door levers throughout (not door knobs)
- Full internal painting (excluding walls)

External Features

- Double clay brick construction wide selection of clay bricks available (builder standard range)
- Choice of render (front elevation only), 2c bricks or standard brick
- Quality Roof Tiles/Colorbond (builder standard range)
- Colorbond gutters and fascia

- Solid core entry doors (not hollow core)
- 6m full width paved driveway
- R4.1 Roof Insulation Included
- Cream mortar in either rolled or stick joints
- Flyscreens to windows & sliding doors
- European House Borer Protection
- 25 Degree Roof Pitch

Professional Services

- 25 year structural warranty (non transferrable)
- Six months maintenance period
- Housing indemnity insurance
- Professional HIA accredited consultant to assist you with your house, land & finance enquiries
- Interior design consultancy
- HIA lump sum fixed price contract
- Cost of plans & drawings included in the price
- Engineer designed concrete footings & floor slab
- Full site Repeg
- Shire building fee included in the price
- Termite Treatment to the whole house

Utility Services

- Double power points throughout (not single)
- Metallic Light switch plate covers
- Four external lights
- Phone point
- 10m sewer allowance past last connection point
- 6m water connection allowance
- 2 external garden taps
- Gas heating point
- Continuous flow gas hot water system

Award-Winning quality,
design and service in
every home. Guaranteed.

Visit website for full range of home designs



HIA
Perth Housing Awards
Award Winning Builder



Visit or call us today
Office Enquiries: (08) 6365 6240
Monday to Friday 8am-5pm

Sales Line: (08) 9244 7444
24 hours, 7 days a week

Fax: (08) 9244 3275

Head Office (Display Centre)
Level 1, Suite 2
467 Scarborough Beach Road
Osborne Park WA 6017

Open 7 days a week

fhbdirect.com.au



Follow us and see what our happy customers say about us.

Images in this brochure are for illustration purposes only. The Specification is correct at time of printing and subject to change at builders discretion. Please ask your House & Land Specialist for details. Builders Registration: 13101
Copyright © 2014 First Home Buyers Direct.