

# Display Home - Zeal



\* Images For illustration purposes only

## Zeal - Display Range

Living Area: 133.9m<sup>2</sup>

Total Area: 171.2m<sup>2</sup>

Minimum Block Width: 7.5m

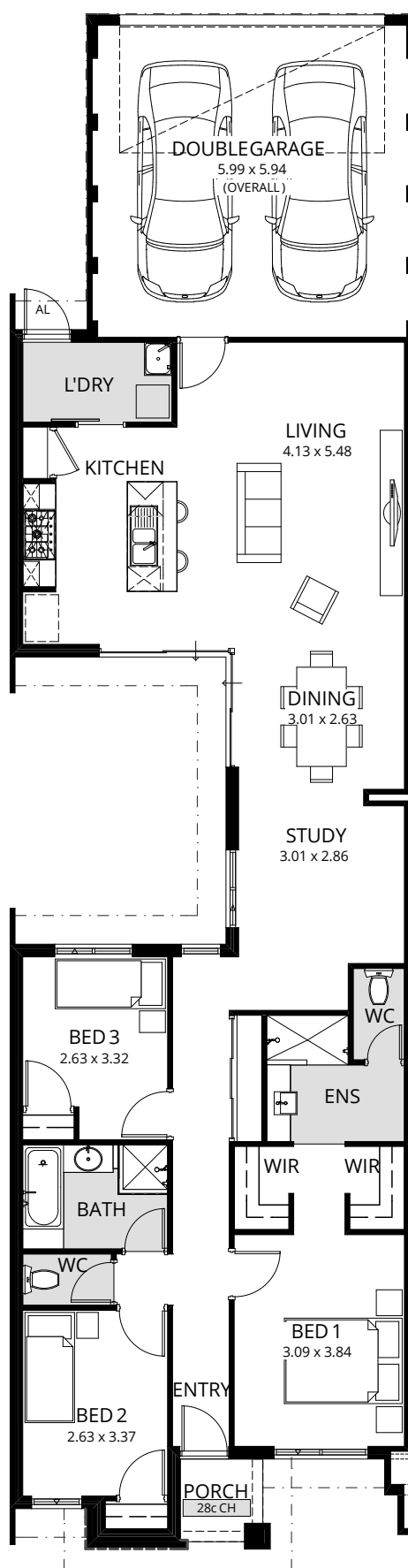
## Display Open

Mon & Wed 2-5pm

Sat, Sun & Public Holidays 1-5pm

10 Felix Lane,  
CLARKSON, WA, 6030

Discover more at  
[fhbdirect.com.au](http://fhbdirect.com.au) or call us  
today (08) 9244 7444



# Full Delux Specification

The Zeal display home includes First Home Buyers Direct **Deluxe Specification**, plus the following specification upgrades;

- Porch with 32c high brickwork, 25c high t-lintel and 28c ceilings
- Feature rendered 29c high blade wall to front elevation
- Second feature render colour to front elevation
- Corinthian Slimlite SLM204 paint grade Entry door with translucent glazing
- External 40mm Glazing bars to front elevation windows only
- 32c high ceilings throughout, 29c fibre cement ceilings to the Garage
- 20mm Essastone tops to the Kitchen modular & island bench
- Stylus Cadet mixers to the Kitchen, Bath and Ensuite
- Feature overhead cupboards to the Kitchen fridge recess
- Feature overhead cupboards to either side of Kitchen rangehood
- 700mm high tiled splashback to the Kitchen
- Dishwasher recess with a single powerpoint & cold water connection
- Remote controlled sectional garage door & shopper entrance door to Garage
- Westinghouse Stainless Steel 900mm appliances
- Aluminum framed Vinyl sliding robe doors to the Linen
- Clear glazed aluminum framed door to the Laundry
- Mitred tiling to the Ensuite and Bath wet area tiling
- Caroma Carboni II Semi Recessed basin to the Ensuite
- Double hobless shower to Ensuite, including tiled feature wall & reflux valve
- Caroma Cosmo 900mm chrome double towel rail to Ensuite
- Kelvinator 26L InstaKnight Gas Continuous flow hot water system, including recess box
- Boundary parapet walls to left and right hand sides of home

## Optional Upgrades (Exclusions)

- Feature tile cladding to 37c high feature pier to front elevation
- 70mm laminated benchtop to the Study
- Ducted reverse cycle air conditioning system
- LED downlights & lighting fixtures
- Main floor tiling and carpets throughout
- Window treatments throughout
- Feature 1c internal & external face brickwork
- Landscaping and reticulation, including gates & fencing
- Communication upgrades, including a digital antenna



Award-Winning quality,  
design and service in  
every home. Guaranteed.

Visit website for full range of home designs



HIA  
Perth Housing Awards  
Award Winning Builder



Visit or call us today

Office Enquiries: (08) 6365 6240  
Monday to Friday 8am-5pm

Sales Line: (08) 9244 7444  
24 hours, 7 days a week

Fax: (08) 9244 3275

Head Office (Display Centre)  
Level 1, Suite 2  
467 Scarborough Beach Road  
Osborne Park WA 6017

Open 7 days a week

[fhbdirect.com.au](http://fhbdirect.com.au)



Follow us and see what our happy customers say about us.

Images in this brochure are for illustration purposes only. The Specification is correct at time of printing and subject to change at builders discretion. Please ask your House & Land Specialist for details. Builders Registration: 13101  
Copyright © 2016 First Home Buyers Direct.